

*Visit*

**FREETESTPAPER.com**

*for more papers*



Website: [freetestpaper.com](http://freetestpaper.com)



[Facebook.com/freetestpaper](https://www.facebook.com/freetestpaper)



[Twitter.com/freetestpaper](https://www.twitter.com/freetestpaper)

Name: \_\_\_\_\_ ( )

Class: \_\_\_\_\_

CHIJ ST NICHOLAS GIRLS' SCHOOL  
 Secondary 4  
 Continual Assessment 2 (70 Marks)

**ENGLISH LANGUAGE**

1128/01

Paper 1

3 May 2017

1 hour 50 minutes

**READ THESE INSTRUCTIONS FIRST**

Write your name, index number and class on all the work you hand in.

Write in dark blue or black ink on both sides of the paper.

Do not use highlighters, glue, correction fluid or correction tape.

Answer **Section A**, **Section B** and one question from **Section C**.

For **Section A**, write your answers in the spaces provided on the question paper.

For **Section B** and **Section C**, write your answers on foolscap paper.

At the end of the examination, hand up all sections separately.

The number of marks is given in brackets [ ] at the end of each question or part question.

For Examiner's Use	
Section A	
Section B	
Section C	
Total	

This document consists of 5 printed pages.



圣尼各拉女校  
 CHIJ ST. NICHOLAS GIRLS' SCHOOL  
 Girls of Grace • Women of Strength • Leaders with Heart

[Turn over

**Section A** [10 marks]

Carefully read the text below, consisting of 12 lines, about Timberland's reforestation project in China's Horqin Desert. The first and the last lines are correct. For eight of the lines, there is one grammatical error in each line. There are two more lines with no errors.

If there is NO error in a line, put a tick (✓) in the space provided.

If the line is incorrect, circle the incorrect word and write the correct word in the space provided. The correct word you provide must not change the original meaning of the sentence.

Examples:

I arrived to my destination at 2pm. at  
.....  
✓

My mother always wears sensible clothes. .....

Timberland is a company with a passion for the outdoors, and it understands the need to preserve the environment. One of its community service project is the Horqin Desert Reforestation Project. The situation in Horqin is dire. Overgrazing and excess deforestation have led to desertification, changing a once lush and green Horqin Pasture into the desert. Timberland is still working hard to establish an environment in which the local people, whom are predominantly engaged in pastoral agriculture, can carry on with the work on its own initiative. To this end, getting the local people to understand the methods and benefits of the greening working is important. Timberland is continuing its tree-planting activities in Horqin Desert, hoping that it will recover its lush greenness. From April 2010, the company has plant one million trees and plans to plant two million more. On top of tree planting, it has plans to commit to other long-term sustainable programmes as well.

1 .....  
2 .....  
3 .....  
4 .....  
5 .....  
6 .....  
7 .....  
8 .....  
9 .....  
10 .....

Adapted from: *Asian Geographic*, July 2011

**Section B [30 marks]**

Begin your answer on a fresh page.

**You are advised to write between 250 and 350 words for this section.**

You should look at the printout of a brochure on page 4, study the information carefully and plan your answer before beginning to write.

You are a Sports Leader and your PE Teacher has asked you to plan a fun learning journey during the Sports Week for your classmates to experience a new sport. You came across a poster highlighting interesting activities suitable for them.

Write an email to your PE Teacher to:

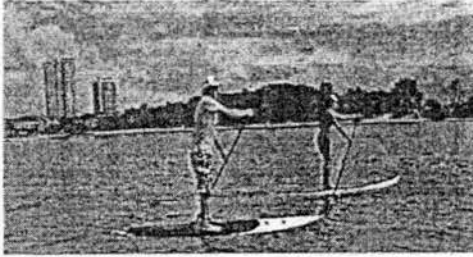
- suggest one activity from the poster
- explain how this activity will provide a balance of learning and fun
- state why you think this learning journey would be a good way to inspire students to continue to adopt an active lifestyle.

Write your email in clear, accurate English and in a persuasive, enthusiastic tone to convince your PE Teacher.

You should use your own words as much as possible.

[Turn over

## SPORTS WEEK!

Stand Up Paddle

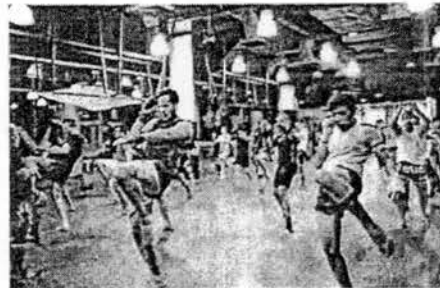
- Stand Up Paddle increases your strength as you navigate your standing self through the sea.
- Holding your arms taunt and using your torso to power your paddling, it is a great workout for your upper body and legs.
- The gentle turning motions as you move your paddle will strengthen your core muscles.

Ultimate Frisbee

- Ultimate Frisbee increases your endurance, speed and jumping ability.
- Train your entire body to build stronger muscles, primarily your legs, core, shoulders and arms.
- With the sudden twists, turns and pivots, you will surely emerge leaner and quicker.

Inline Skating

- Inline skating is a low impact and high calorie-burning sport.
- Train your quadriceps every time you extend your knees and flex your hips.
- Skating forces you to use your core muscles more because you have to balance and control your body when you are on wheels.

Mixed Martial Arts

- Mixed Martial Arts is a high impact sport that increases endurance and flexibility.
- Train your core muscles as you perform at high power for five 5-minute rounds.
- Build your body with strength training and learn to stretch correctly for improved flexibility.

**Section C [30 marks]**

Begin your answer on a fresh page.

You are advised to write between 350 and 500 words on one of the following topics.

At the head of your composition, write the number of the topic you have chosen.

- 1 What are some values that are highly prized in your society?
- 2 'Even the simplest things can be beautiful.' Write about how some simple gestures or words have moved you.
- 3 'Mothers should not go out to work when their children are very young.' What are your views?
- 4 'Voluntary work is always worth doing.' Do you agree?

## Section A [10 marks]

Carefully read the text below, consisting of 12 lines, about Timberland's reforestation project in China's Horqin Desert. The first and the last lines are correct. For eight of the lines, there is one grammatical error in each line. There are two more lines with no errors.

If there is NO error in a line, put a tick (✓) in the space provided.

If the line is incorrect, circle the incorrect word and write the correct word in the space provided. The correct word you provide must not change the original meaning of the sentence.

Examples:

I arrived to my destination at 2pm. at

My mother always wears sensible clothes.

Timberland is a company with a passion for the outdoors, and it understands the	
need to preserve the environment. One of its community service projects is the	1 projects
Horqin Desert Reforestation Project. The situation in Horqin is dire. Overgrazing	2 ✓
and excess deforestation have led to desertification, changing a once lush and	3 excessive
green Horqin Pasture into the desert. Timberland is still working hard to establish	4 a
an environment in which the local people, who are predominantly engaged in	5 who
pastoral agriculture, can carry on with the work on its own initiative. To this end,	6 their
getting the local people to understand the methods and benefits of the greening	7 ✓
working is important. Timberland is continuing its tree-planting activities in Horqin	8 work
Desert, hoping that it will recover its lush greenness. From April 2010, the company	9 Since
has plant one million trees and plans to plant two million more. On top of tree	10 planted
planting, it has plans to commit to other long-term sustainable programmes as well.	

Adapted from: *Asian Geographic*, July 2011



圣尼各拉女校  
CHI J ST. NICHOLAS GIRLS' SCHOOL  
Girls of Grace • Women of Strength • Leaders with Heart